

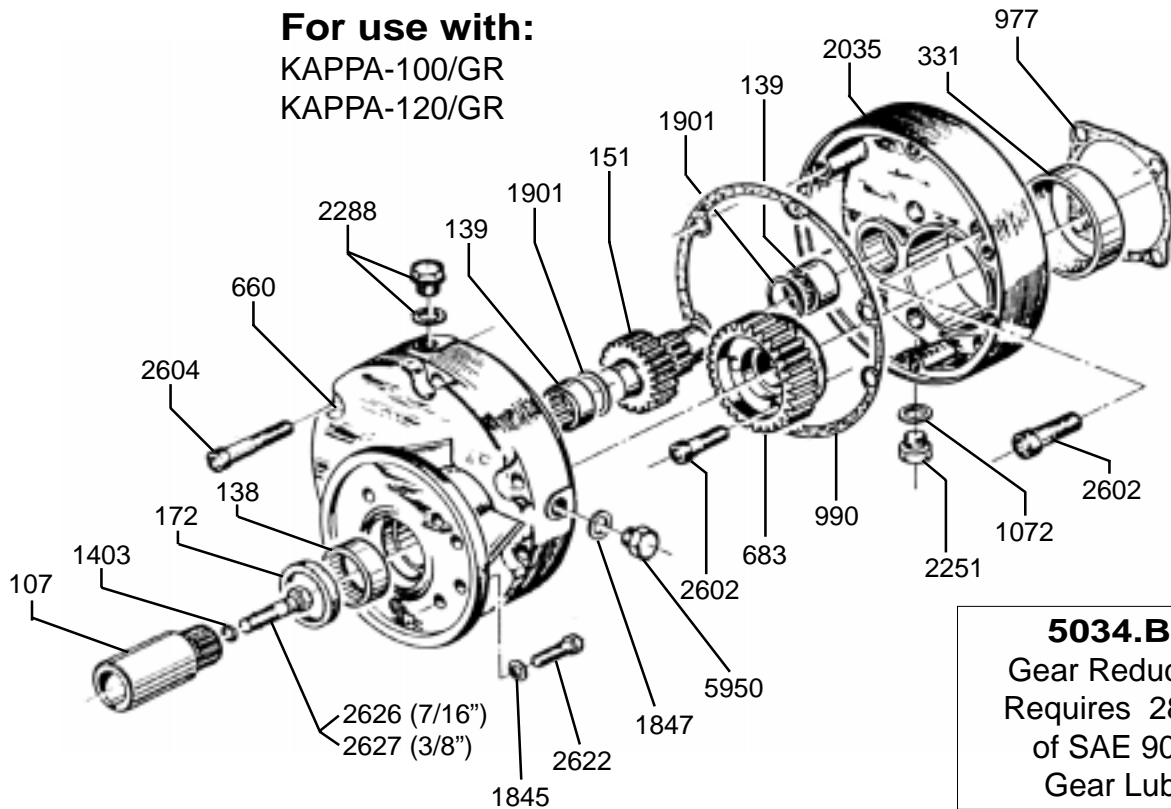
5034.B5 Gear Reduction

Parts List and Installation Instructions

For use with:

KAPPA-100/GR

KAPPA-120/GR



REF. #	PART#	DESCRIPTION	QTY	REF. #	PART#	DESCRIPTION	QTY
107	0004.26	Engine Gear	1	1845	1403.10	Washer	4
138	0006.04	Bearing	1	1847	1403.12	Washer	1
139	0006.10	Bearing	2	1901	1413.02	Thrust Washer	2
151	0019.02	Transmission Gear	1	2035	1505.31	Gear Case Half	1
172	0007.34	Seal	1	2251	1603.02	Oil Plug	1
331	0115.02	Bushing	1	2288	1603.81	Vent Cap	1
660	0212.11	Gear Case Half	1	2602	1805.25	Bolt, M10 x 45	7
683	0213.24	Pump Gear	1	2604	1805.15	Bolt, M8 x 60	6
977	0602.05	Gasket	1	2622	1807.07	Bolt, 5/16" x 1"	4
990	0602.38	Gasket	1	2626	1807.11	Bolt, 7/16" x 2"	1
1072	0605.09	Washer	1	2627	1807.10	Bolt, 3/8" x 2"	1
1403	1101.60	O-Ring	1	5950	1804.77	Side Plug	1

***NOTE - USE LOCTITE THREADLOCKER 242 OR EQUIVALENT ON ALL BOLTS.**

1. Apply a light coating of anti-seize compound or grease to engine shaft and install 1/4" key, which is supplied with the engine.
2. Install engine gear (Ref #107) on engine shaft and secure with 3/8" bolt (Ref #2627) or 7/16" bolt (Ref #2626) provided. Make sure O-Ring (Ref #1403) is installed on bolt.
3. Install gearbox assembly onto engine, using caution not to damage gearbox seal (Ref #172). Secure assembly to engine using the (4) 5/16 X 1" bolts (Ref #2622) and (4) washers (Ref. #1845) provided
4. Fill gear box with 90W gear lube to level plug (Ref #5950).

UDOR U.S.A., INC.

500 Apollo Drive
 Lino Lakes, MN 55014
 TEL. (651) 785-0666
 FAX. (800) 732-2670
 www.udorusa.com