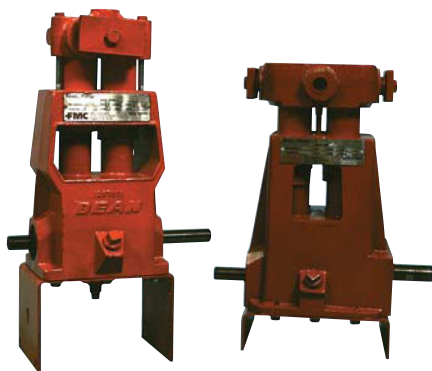




## JOHN BEAN PISTON PUMPS



R10

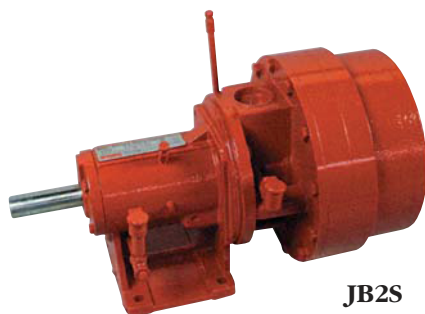
R2020

For years these rugged pumps have been the yardstick by which other pumps are measured. Ideal for turf, tree and agricultural applications.

- Ceramic cylinders for long life.
- Heavy duty cast iron pump case.
- Stainless steel valves and seats.
- All working parts are constantly lubricated by oil bath.
- Connecting rods have automotive type inserts.
- Over 100 years of building quality pumps.
- Available in a wide variety of sizes.

	R5	R10	R2020	130	R6-60D
Pistons	2	2	4	3	3
Piston Size	1 3/8"	1 5/8"	1 5/8"	2 1/4"	2 3/4"
Max GPM	5	10	20	35	60
Max PSI	400	500	500	700	800

## JOHN BEAN CENTRIFUGAL PUMPS



JB2S

- 8" Impeller • 100 GPM • 100 PSI •
- 3400 RPM max • Also available in 2 stage model

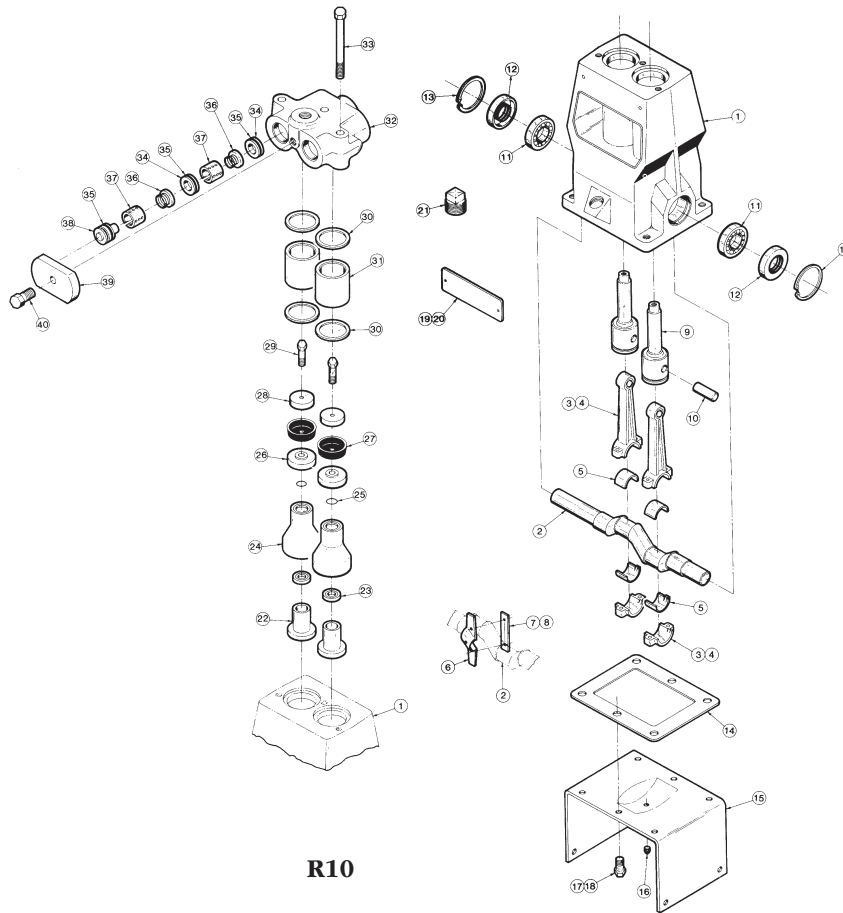
## BEAN PUMP REPAIR KITS

<b>John Bean Piston Pump Model</b>	<b>Valve Kit</b>	<b>Packing Kit</b>
R-5B	5251825	5251829
R10	5251825	5251827
R2020	5251825 (2)	5251827 (2)
130-HS, HD, VS, VD	5259415	5283626
R6-50 R6-60	5251841	5251836
R6-60D	5260633	5260634
<b>Diaphragm Pump Model</b>	<b>Valve Kit</b>	<b>Diaphragm Kit</b>
MP20	5269532	5269530
MP40	5269528	5269525
<b>Centrifugal Pump</b>	<b>Seal Kit</b>	
JB-1S	5260631	
JB-2S	5260632	

# BEAN PUMP REPAIR PARTS



Pumps



R10

REF. NO.	PART NO.	DESCRIPTION	QTY.	REF. NO.	PART NO.	DESCRIPTION	QTY.
1	1267611	Pump Case	1	23	1269388	Washer, Umbrella	2
2	1244980	Crankshaft	1	24	1279148	Umbrella	2
3	1263906	Connecting Rod	2	25**	1101339	O-Ring 11/16 OD x 1/16	2
4	1278439	HHCS 1/4 - 20 x 1 Lock	4	26	1282557	Packing Holder 1 5/8	2
5	1280908	Bearing Con. Rd Pr.	4	27**	1251925	Packing 1 5/8	2
6	1255285	Oil Slinger RH	1	28	5257218	Packing Washer 1 5/8	2
7	1272419	Speed Nut	1	29**	1284516	HHCS 5/16 - 18 x 1 1/2 SS	2
9	1216823	Crosshead	2	30**	A91684	Gasket Cylinder	4
10	1219650	Wrist Pin	2	31	1241364	Cylinder 1 5/8	2
11	1177804	Bearing Ball	2	32	1241397	Valve Chamber	1
12	1219669	Oil Seal	2	33	1101262	HHCS 3/8 - 16 x 5	3
13	1113528	Retainer Ring	2	34*	1219615	Valve Seat	4
14	1219606	Gasket	1	35*	1177394	O-Ring 1 13/16OD x 1/8	6
15	1255297	Mount Base	1	36*	5253499	Valve Disc & Spring Assembly	4
16	1105666	Pipe Plug 1/4 Std.	1	37	1219610	Valve Cage	4
17	1100068	HHCS 3/8 - 16 x 3/4 Gr5	6	38	1219614	Valve Cover	2
18	1177455	Spring Washer 3/8 Style 8	6	39	1255887	Clamp, Valve Cover	1
19	5262768	Plate Model Spec Pump/Spray	1	40	1100064	HHCS 1/2 - 13 1 1/2	1
20	1187413	Screw, Round Head Slotted #4 x 3/16	2	*	5251825	Valve Repair Kit	
21	1105060	Pipe Plug 3/4 Blk Std.	1	**	5251827	Cylinder Repair Kit	
22	1218743	Sleeve	2		1250638	Valve Puller	

# JOHN BEAN RELIEF VALVE - MODEL 1207620

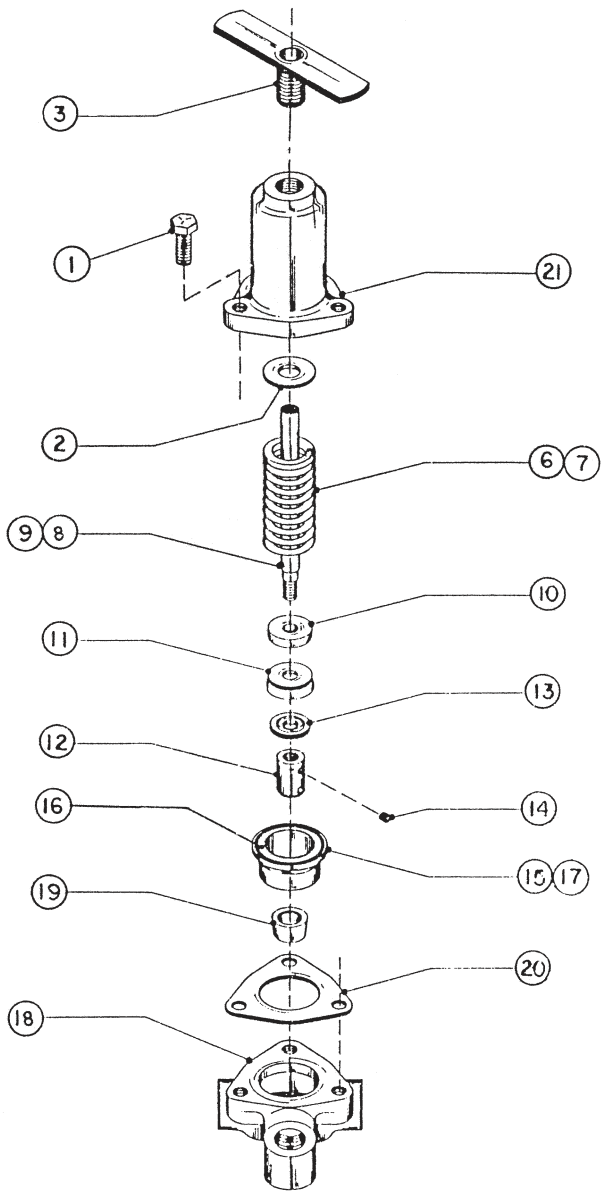


Pumps



Extra heavy duty cast iron relief valve has ceramic sleeve and stainless steel valve and seat for exceptional wear resistance.

- Three 3/4" NPT pressure ports allow flow through use plus gauge or dump valve mount.
- Large T-handle adjustment knob.
- Maximum flow 40 GPM.
- Pressure Range 50-800 PSI.



Ref. No.	Part No.	Description	Qty. Req'd.
1	1100043	HHCS 3/8 - 16" x 1 1/4"	3
2	1207623	Spring Cap	1
3	1208384	Nut Assembly	1
6	1207638	Spring, Heavy	1
7	1207639	Spring, Light	1
8	*1251513	Stem Assembly	1
9	1207621	Stem	1
10	1207624	Spring Seat	1
11	1270058	Cup, Plunger	1
12	28090	Valve	1
13	30398	Plunger Washer	1
14	320383	Set Screw 5/16-18 x 5/16	1
15	1268474	Sleeve & Cylinder Assembly	1
18	27670	Relief Valve Body	1
19	28089	Valve Seat	1
20	28098	Gasket	1
21	30402	Housing	1

\*Consists of items 9-14

#5256493 Repair Kit Includes:

Part No.	Description	Qty. Req'd.
1177860	Set Sc 5/16 - 18 x 1/4	1
1270058	Cup Plunger RV	1
28089	Seat	1
28090	Valve	1
28098	Gasket	1



Heavy duty stainless steel adjusting nut  
Part # 1208384-2