



## HYDRA-CELL PUMPS

### Hydra-Cell Pumps Feature

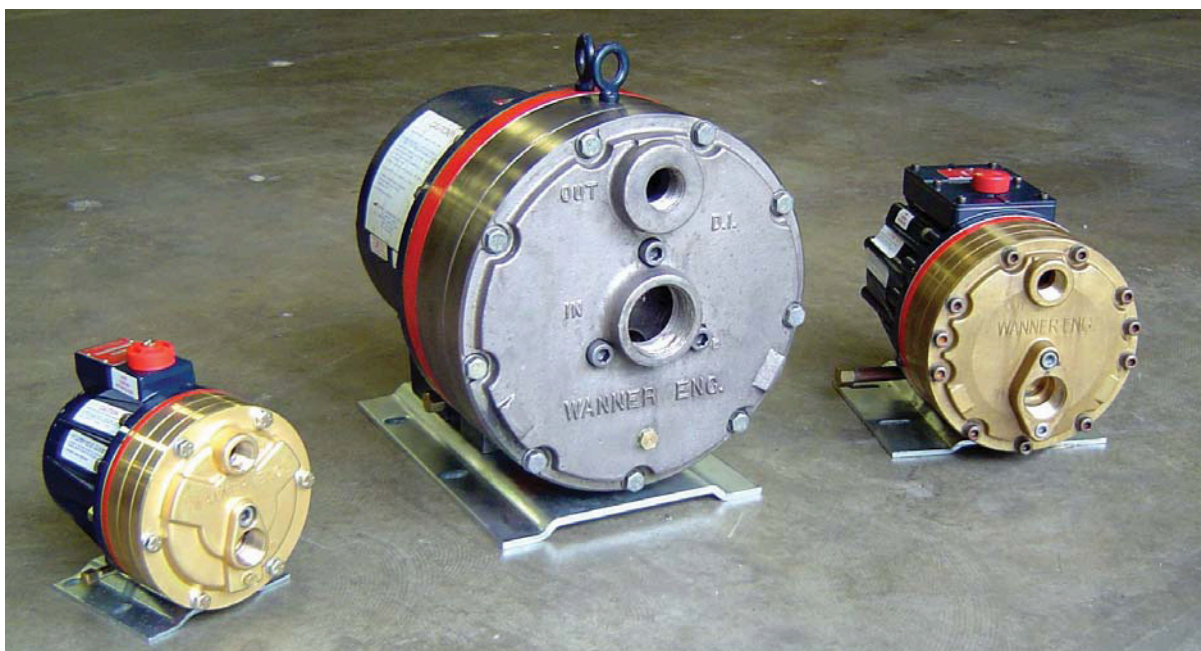
- Heavy duty industrial construction.
- Hydraulically balanced diaphragm.
- Quiet, smooth operation.
- Easy maintenance.
- Self priming.
- All moving parts are submerged in oil.

The Hydra-Cell's unique design makes it ideal for difficult pumping applications. The fluid end is available in a wide variety of materials which makes it easy to match components with the fluid to be pumped.

### Applications include:

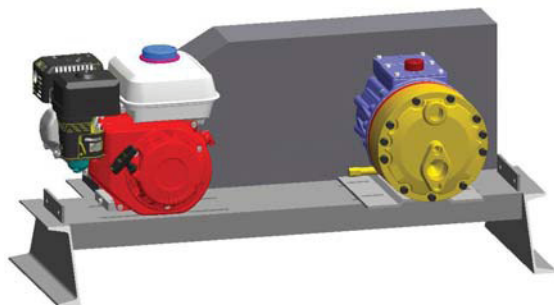
- Abrasives • Hot Fluids • Chemicals
- Slurries • Machine Coolant
- Reclaim Water • Wettable Powder • Salt Water
- Fertilizer and Soap Solutions • And Many More

Hydra-Cell Specifications							
Pump Model	Max GPM	Max PSI	Max RPM	Shaft Diameter	Inlet Port NPT	Outlet Port NPT	Weight
D10	8.5	1000	1450	7/8"	1"	3/4"	45 lbs.
H25	20	1000	1050	1 1/8"	1 1/2" NPT	1" NPT	115 lbs.
D35	37	1200	1050	2"	2 1/2" NPT	1 1/4" NPT	240 lbs.
D40	40	1200	900	2"	2 1/2" NPT	1 1/4" NPT	370 lbs.



## HYDRA-CELL PUMP PACKS

Heavy duty steel base frame with belt drive and belt guard. Includes pressure relief valve, strainer and liquid filled pressure gauge. Can be set up to power mechanical agitator.

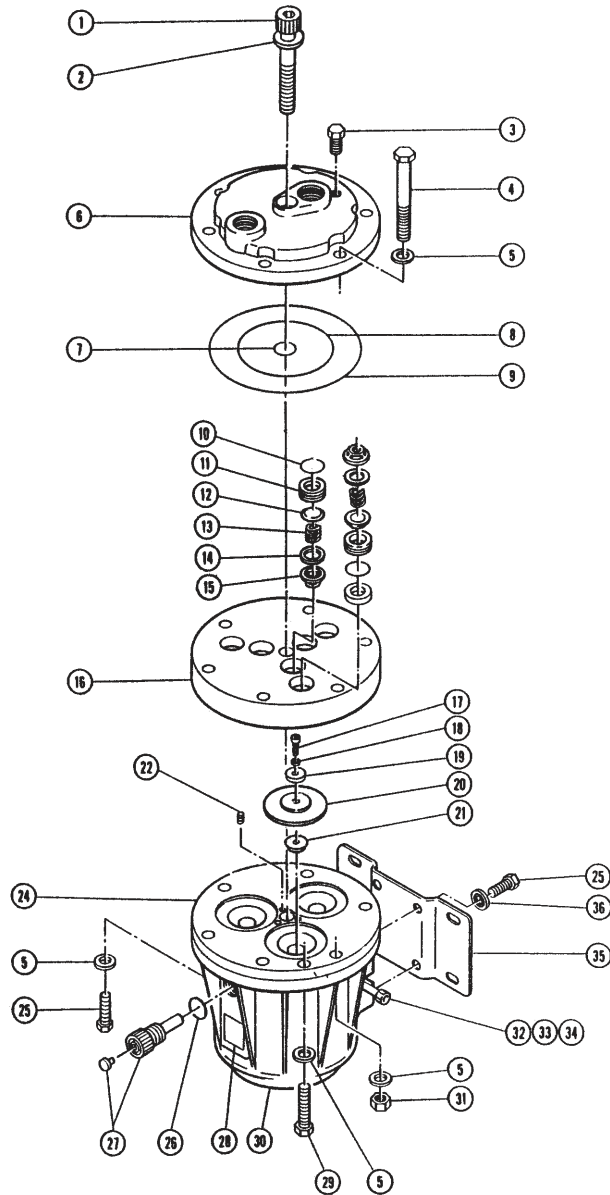


Model	Pump	Engine	Max GPM	Max PSI
A22D10A14	D10	5.5 Honda	8.5	400
A23D10A14	D10	8 Honda	8.5	600
A32D25A14H	H25	13 Honda	20	600
A25D40C24	D40	25 Kohler	35	600
A35D40C24	D40	35 Wisconsin	40	750

# HYDRA-CELL D10 GENERIC PARTS LIST



Please give specific model number when ordering parts.



REF. NO.	PART NO.	DESCRIPTION
1	D10-081-2010	Cap Screw, Socket head
2	D10-084-2210	Washer
3	D10-038-2210	Plug, brass
4	D10-024-2009	Bolt, 3 1/8" hex-head
	D10-024-2010	Bolt, 3 1/2" hex-head (Hi-Flow)
5	D10-048-2010	Washer, 3/8"
6	D10-004-1008	Manifold, brass (Center bolt)
7	D10-083-2110	O-Ring, center bolt, Buna
8	D10-073-2110	O-Ring, inner manifold, Buna
9	D10-074-2110	O-Ring, outer manifold, Buna
10	D10-035-2110	O-Ring, valve seat, Buna
11	D10-020-1010	Valve Seat, 17-4 SST, HT
12	D10-021-1010	Valve, 17-7 SST, stamped, HT
13	D10-022-3114	Valve Spring, Elgiloy
14	D10-092-2111	Tetra Seal, Viton
15	D10-023-2310	Retainer, valve spring, Celcon (Hi-Flow)
16	D10-003-1008	Valve Plate, brass (Center Bolt)
17	D10-030-2010	Screw, flat head, SST, 3/8"
18	D10-047-2110	O-Ring, follower, Buna
19	D10-017-1010	Follower
20	D10-018-2310	Diaphragm, Buna
21	D10-016-1010	Plunger
22	D10-082-2010	Set Screw, 3/8"
24	D10-002-1210	Cylinder Casting Assembly, Buna
25	D10-029-2110	Cap Screw, hex head, 7/8"
26	D10-080-2110	O-Ring, oil fill, Buna
27	D10-039-1210	Cap, oil fill (includes breather)
28	D10-040-2410	Name Plate
29	D10-087-2010	Cap Screw, hex head, 1 1/8"
30	D10-001-1010	Pump Housing
31	D10-028-2010	Nut, hex, 3/8"
32	D10-076-2210	Elbow, brass 1/8"
33	D10-077-2210	Pipe, brass 1/8"
34	D10-078-2210	Cap, brass, 1/8"
35	D10-025-1010	Base
36	D10-054-2110	Washer, whakeproof, 3/8"

## Shop Talk

When changing diaphragms on Hydra-Cell pumps, be sure to prime the hydraulic cells before reinstalling valve plate and manifold. After new diaphragms are mounted and pump is filled with oil (30 weight), rotate pump shaft by hand until oil flows around each diaphragm. If no oil flows from a particular diaphragm, oil level may be low or hydraulic end of pump may need repair.



## WANNER MODEL A52



### Wanner Model A52 Pressure Control and Hydraulic Unloader Valve

The Wanner Model A52 pressure control and hydraulic unloader valve is for use in high pressure pumping installations with intermittent loading. The A52 acts as a pressure regulator by modulating fluid flow through a bypass valve. When the discharge line from the control valve is closed, the load is removed from the connected pump and driver.

#### The A52 has the following features:

- Aluminum alloy casting for low weight and corrosion resistance.
- Hardened stainless steel check valves and seats.
- All wear parts easily replaceable.
- Available in two sizes - 3/4" NPT with a nominal capacity of 10 GPM and a 1" NPT with a nominal capacity of 30 GPM.

## WANNER C64 PRESSURE RELIEF VALVE



### Sealless diaphragm style pressure relief / regulator valve

- 316 Stainless steel body for better resistance to abrasive sprays.
- Special 4 port body for greater plumbing flexibility. Three 3/4" FNPT flow through pressure ports and a 3/4" FNPT bypass port.
- Extra large, heavy duty T handle adjusting nut.
- Made in America.
- Heavy duty industrial construction.
- Smooth, chatter free bypass. Adjustable pressure from 75 - 800 PSI.
- Valve can be serviced in place without removing plumbing.

Order # C64C101



## HYDRA-CELL INDUSTRIAL RELIEF VALVES

Heavy duty construction of brass (or stainless steel) with flow through design.

Three sizes to match your pump:



	C22	C23	C24
GPM	3-10	10-20	20-40
PSI	200-500	200-500	100-300
(Variable)	500-1000	500-1000	300-1000
	1000-1500	1000-1500	1000-1500
Ports	3/4" NPT	1" NPT	1 1/4" NPT

### PISTON TYPE PRESSURE RELIEF VALVE



#### Model 6815

- Brass or aluminum with stainless steel springs.
- Choice of 1/2" or 3/4" NPT (M) inlet and (F) outlet connections.
- For pressures to 300 or 700 PSI.
- Also available in brass with hardened stainless steel seat.

### PISTON TYPE PRESSURE RELIEF VALVE



#### Model 110

- Brass.
- Choice of 1/4" or 3/8" NPT (M) inlet and (F) outlet connections.
- For pressures to 50, 300 or 700 PSI.
- Removable bonnet for servicing unit without removing valve from line.

## DIAPHRAGM TYPE PRESSURE RELIEF VALVE

Choice of 1/2" and 3/4" NPT sizes. Chemical resistant diaphragm seals off operating parts from contact with chemicals and remains resilient for chatter-free, responsive pressure control.



#### Model 8460

Nylon inlet body with aluminum bonnet. Choice of 1/2" or 3/4" NPT (M) inlet and (F) outlet connections. Flow rates to 56 GPM for 1/2" size and to 70 GPM for 3/4" size. Pressures to 50 PSI or 300 PSI.

Note: 1/4" gauge port.

#### Features:

- Stainless steel springs, responsive to the pressure range of each valve.
- Extra large valve passages to handle full flow from supply line.
- Positive lock nut to hold adjustment screw firmly in place. Not affected by jarring and vibration.

## PISTON TYPE PRESSURE RELIEF VALVE



#### Model 23120

- Polypropylene with stainless steel spring.
- Excellent chemical resistance.
- EPDM rubber o-rings (viton optional).
- Choice of 1/2" or 3/4" NPT (M) inlet and (F) outlet connections.
- For pressures to 60 PSI or 150 PSI.
- 1/4" port for pressure gauge.