



# HYPRO CENTRIFUGAL PUMPS - SERIES 9200C



**Model 9203C**

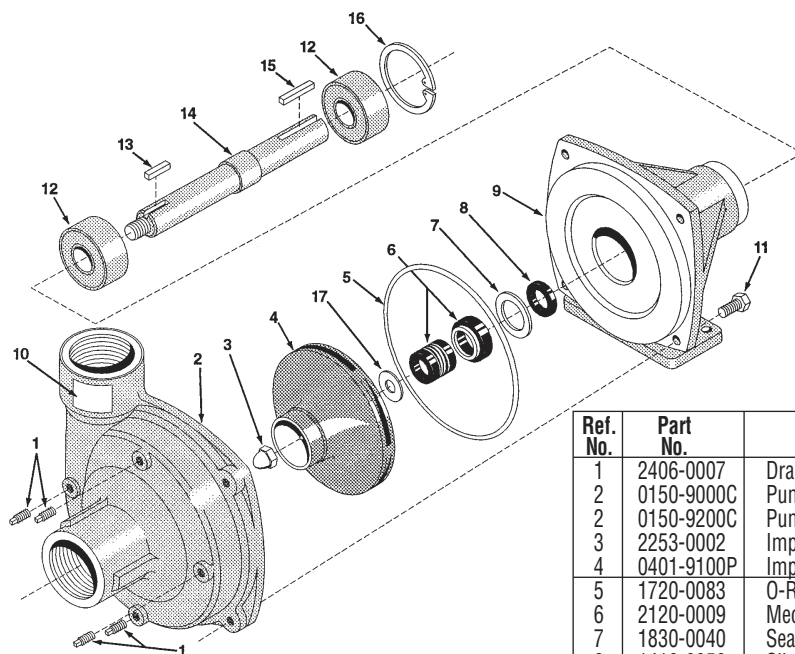
Includes Models: 9202C, 9203C and 9203C-R

- Pedestal mount, direct drive
- Max. flow: 103-140 GPM
- Max. pressure: 170 PSI
- Max. speed: 6000 RPM
- Shaft: 5/8" solid
- Port sizes: 9202C, 1 1/4" NPT inlet; 1" NPT outlet  
9203C, 1 1/2" NPT inlet; 1 1/4" NPT outlet
- Max. fluid temperature: 140° F
- Housing: cast iron
- Impeller: glass-filled nylon
- Pump shaft rotation: CCW\* (CW on 9203C-R)
- Shaft seals: Viton standard

\* CCW (counterclockwise) and CW (clockwise) is determined when looking at the shaft end.

RPM	10 PSI		20 PSI		40 PSI		60 PSI		80 PSI		100 PSI		120 PSI		140 PSI		160 PSI		
	GPM	HP	GPM	HP	GPM	HP	GPM	HP	GPM	HP	GPM	HP	GPM	HP	GPM	HP	GPM	HP	
2400	80	1.9	65	1.8	26	1.3													
3600	105	5.3	105	5.3	92	5	50	3.7											
4200			120	7.9	115	7.7	98	7.1	56	5.3									
5000			140	12.6	138	12.6	130	12.2	118	11.6	88	9.9	45	7.2					
5500			140	14.9	138	14.9	135	15.2	130	15.2	118	14.4	90	12.5	60	9.8			
6000			140	17.1	140	17.5	140	18	135	18.2	130	18.8	125	18.2	100	16.3	80	13.5	

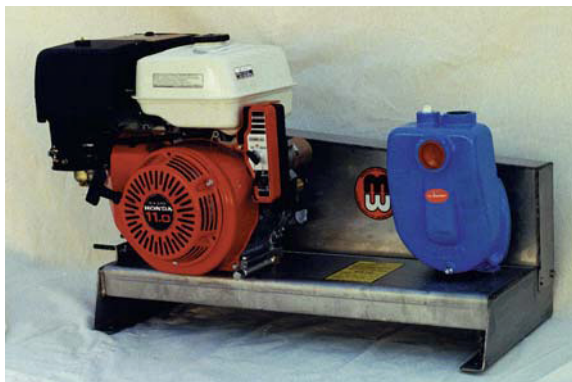
## PARTS LIST - 9200 SERIES



Ref. No.	Part No.	Description	Qty. Req'd.
1	2406-0007	Drain Plug	4
2	0150-9000C	Pump Casing (Models 9201C and 9203C)	1
3	0150-9200C	Pump Casing (Models 9200C and 9202C)	1
4	2253-0002	Impeller Nut	1
5	0401-9100P	Impeller (Nylon) (std.)	1
6	1720-0083	O-Ring	1
7	2120-0009	Mechanical Seal (Standard Viton)	1
8	1830-0040	Seal Retainer	1
9	1410-0056	Slinger Ring	1
10	0750-9200C	Mounting Flange	1
11	6031-0252	Nameplate (Specify Model Number)	1
12	2210-0020	Bolt	4
13	2000-0010	Ball Bearing	2
14	1610-0015	Key	1
15	0501-9200	Pump Shaft	1
16	1610-0004	Key	1
17	1820-0013	Bearing Retainer	1
18	1700-0100	Gasket	1



### HYPRO A9203SP-11 PUMP PACK



Centrifugal pump packs include Hypro high pressure centrifugal pumps powered by Honda engines. Pumps are belt driven for higher speeds and higher pressure. Stainless steel base and belt guard for long life.

Model	Pump	Engine
A9203-8	9203C	8 HP Honda
A9203-11	9203C	11 HP Honda
A9203SP-11	9203C-SP	11 HP Honda

### SELF-PRIMING CENTRIFUGAL



Model 9203C-SP

These are the most versatile centrifugal pumps you'll ever use! They offer outstanding performance without the need for a flooded suction inlet. The pumps are ideal for sprayers that require pump mounting above the carrier tank. High pressure capabilities allows the pump to be used for both tank filling and spraying.

- Operates without flooded suction.
- Prevents damage to the mechanical seal if the pump is run dry.
- Comprises valveless design.
- Delivers high pressure (over 100 PSI at 5000 RPM from Model 9203C-SP).
- Includes secondary outlet port for easy priming.

### BELT DRIVEN CENTRIFUGAL PUMPS



#### 9400 Series

Hypro's high performance belt drive centrifugals are ideal for most types of turf and agricultural spraying where the power source is a power take off (PTO). Available in a wide variety of shaft styles. For almost any PTO application.

### CLOSE COUPLED CENTRIFUGAL PUMP



**Hypro Model 1538** pump assembles directly onto a 5 HP engine (must have standard threaded shaft) for a versatile, compact pumping system.

- Fits 6.5 HP Honda engine with threaded shaft #GX200TX2

**CENTRIFUGAL PUMPS**



Ace Pumps  
Model FMCH

Original equipment on many turf and agricultural sprayers. These heavy-duty cast iron pumps are well known for their ability to efficiently handle the abrasive and corrosive chemical solutions and wettable powders normally found in herbicides, fungicides and pesticides.

Call for assistance in choosing the correct pump for new applications or replacements.



Memphis Manufacturing  
ECR-55



Hypro Pumps  
Model 9205C



Hypro Pumps  
Model 9303S-HMIC

**BANJO POLYPROPYLENE CENTRIFUGAL PUMP**



Model 200P-5

- Self-priming.
- Corrosion resistant high strength polypropylene body.
- Lightweight.
- Low maintenance.
- Ideal for low pressure applications.
- 3 and 5 horsepower available with Briggs & Stratton and Honda engines.

**IPT HIGH PRESSURE CENTRIFUGAL PUMPS**



- High pressure (up to 88 PSI) centrifugal pump motor combustion for high volume fire fighting, watering and washing applications.  
**Pump #2P5**
- Built-in EPDM check valve for fast priming.
- Fits 6.5 HP Honda engine with threaded shaft.  
**#GX200TX2**